

# AdheSE<sup>®</sup>

Self-etching adhesive



Technique-  
tolerant and  
time-saving

# AdheSE<sup>®</sup>

THE ADHESIVE  
THAT SAVES TIME.

## Self-etching, dual-curing, filled two-component adhesive system for enamel and dentin

The self-etching adhesive system AdheSE owes its popularity to its many different applications. As phosphoric acid etching is not required, AdheSE helps to save time and reduces postoperative sensitivity to a minimum.

## Reduction of postoperative sensitivity

AdheSE is insensitive towards different surface conditions on dentin. The performance of the primer remains unchanged on dry or moist dentin and even if it is distributed with a strong stream of air.

## Indications



- Light-curing composite, ceromer and compomer restorations
- For core build-ups using dual- or self-curing composites after light-curing of the bonding agent



Clear colour coding - green for the primer and black for the bonding agent - prevents confusion. Clearly arranged pictograms on the pad are self-explanatory.

# CONVINCING RESULTS

## Bond

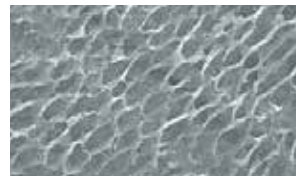
Because of its low pH chemistry, AdheSE produces a well-defined etch pattern, which forms the basis for an optimum enamel bond.

## Technique tolerance

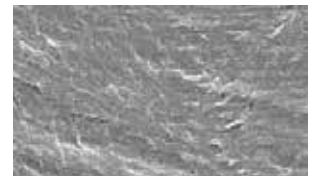
AdheSE is insensitive towards different surface conditions on dentin. The performance of the primer remains unchanged on dry or moist dentin and even if it is distributed with a strong stream of air.

## Bonding values

AdheSE generates a bond immediately – the initial bonding values on dentin and enamel are of particular importance to prevent the build-up of tension. AdheSE exhibits an outstanding capacity for generating these favourable initial bonding values.

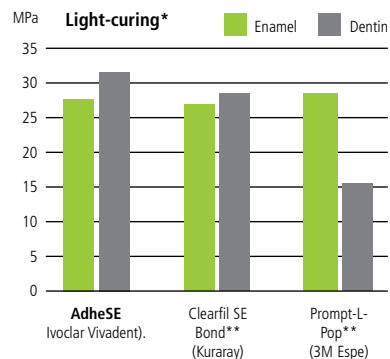


Well-defined etch pattern achieved with AdheSE



Less well-defined etch pattern achieved with product B

SEM pictures by Research & Development, Ivoclar Vivadent AG / Schaan 2002



\*shear bond strength after 24 hours

\*\*not registered trademarks of Ivoclar Vivadent AG

Prof. Dr K.-J. Reinhardt, University of Münster, Germany, 2002

# DELIVERY FORMS

## Intro Pack

- 1 bottle AdheSE Primer, 5 g
- 1 bottle AdheSE Bond, 5 g
- 1 AdheSE Pad
- 25 applicators each in green and black



## Refill

- 1 bottle AdheSE Primer, 5 g



## Refill

- 1 bottle AdheSE Bond, 5 g



## Refill

- 1 bottle AdheSE Primer, 5 g
- 1 bottle AdheSE Bond, 5 g



## Applicator Refill

- 25 green applicators
- 25 black applicators



# DIRECT RESTORATIONS



Preoperative situation



Apply AdheSE Primer for 30 s.



Disperse Primer with a strong stream of air.



Apply AdheSE bonding agent.



Light-cure the bonding agent for 10 s.



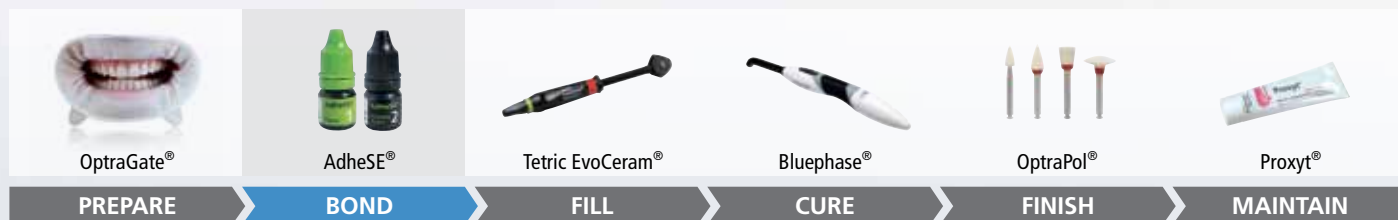
The result

Source: Research & Development, Ivoclar Vivadent AG, Schaan, Liechtenstein 2002



## Direct Restoratives

AdheSE® forms a part of the “Direct Restoratives” product category. The products of this category cover the procedure involved in the direct restoration of teeth – from preparation to restoration care. The products are optimally coordinated with each other and enable successful processing and application.



### THESE ARE FURTHER PRODUCTS OF THIS CATEGORY:

#### Tetric EvoCeram® Bulk Fill

The bulk-fill composite



Posterior efficiency, zero compromise

- Fill with up to 4 mm bulk increments due to Ivocerin®, the patented light initiator
- Sculpt and contour with ease as a result of the material's smooth consistency
- Then light-cure ... and the esthetic restoration is done!

#### Bluephase® Style

The curing light



The smallest LED for every use

- Every hand – comfortable to hold for men and women
- Every material – universal use due to Polywave® LED with broadband spectrum
- Every time – optional corded operation due to Click & Cure

Would you like to know more about the products of the “Direct Restoratives” category? Simply get in touch with your contact person at Ivoclar Vivadent or visit [www.ivoclarvivadent.com](http://www.ivoclarvivadent.com) for more information.

Production and distribution:

**Ivoclar Vivadent AG**  
Benderstr. 2  
9494 Schaan  
Liechtenstein  
Tel. +423 235 35 35  
Fax +423 / 235 33 60  
[www.ivoclarvivadent.com](http://www.ivoclarvivadent.com)

Distribution Germany

**Ivoclar Vivadent GmbH**  
Dr. Adolf-Schneider-Str. 2  
D-73479 Ellwangen, Jagst  
Tel. +49 (0) 79 61 / 889-0  
Fax +49 (0) 79 61 / 63 26  
[info@ivoclarvivadent.de](mailto:info@ivoclarvivadent.de)  
[www.ivoclarvivadent.de](http://www.ivoclarvivadent.de)

Descriptions and data constitute no warranty of attributes.  
© Ivoclar Vivadent AG, Schaan/Liechtenstein  
en/2013-12-16

**ivoclar**  
**vivadent**  
passion vision innovation