

ORDERING PROCESS SERVICE+ “DESIGN & PRODUCTION”

DISPATCHING THE MODEL AND TRANSFERRING THE SCAN DATA

Dental
laboratory

Ivoclar Digital
Service+



1. Sign in/registration

Order Manager



2. Create an order

- Fill out the order form completely
- Print out the order form



3. Model preparation

Die model with removable segments and exposed, marked preparation margin (unvarnished die)



- **For implant models:** Prepare full, uncut gingival mask/solid master model
- Create emergence profile on gingiva mask
- **For implant bars:** Tooth set-up required (wax-up for orientation)
- **For implant bridges:** Tooth set-up or wax-up required
- **For single complete dentures:** Provide bite registration, functional model and antagonist model
- **For complete upper and lower dentures:** Provide two immobilized bite registrations with functional models
- To ensure correct positioning of the teeth during the set-up in the CAD software, the midline of the bite rim must be marked.



Please note:

- Use intact laboratory impants/analogue
- Send models without articulation base only
- Include counter model and/or squash bite
- Pack the model records securely (implant model incl. full, uncut gingival mask)

– Dispatch options

Pick-up order



Self-dispatch to

Ivoclar Vivadent Manufacturing GmbH
Gustav-Flora-Straße 32
39025 Naturns | BZ | Italy



4. Scan & Design

- Prepare scan data and create design proposal
- Send design proposal via e-mail to the laboratory



5. Check and approval

- Check the design proposal and approve production
- Production starts on the same working day after written confirmation (via e-mail) - received before 2pm



6. Production

- Start of production with specified material
- Final quality check



7. Dispatching

UPS parcel dispatch to the laboratory

ORDERING PROCESS SERVICE+ “DESIGN & PRODUCTION”

DISPATCHING THE MODEL AND TRANSFERRING THE SCAN DATA

Dental
laboratory

Ivoclar Digital
Service+

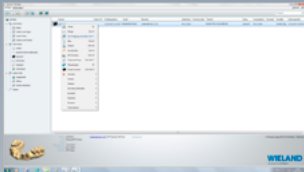


1. Sign in/registration

INBOX

3shape

Install Ivoclar Digital CAD data base



Additional CAD systems



Order Manager

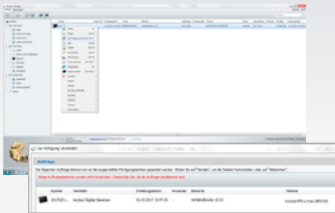


2. Sending the scan data

INBOX

3shape

- Fill out the order form completely
- Select the manufacturer:
“Ivoclar Digital Service+”



- Additional CAD systems via Order Manager
- Completely fill out the order form and upload the scan data
- Possible file types for scan data upload
.stl .dcm .ULDC .3oxz
.3ox .3se .3si .UDX



3. Design

- Prepare scan data and create design proposal
- Send design proposal via e-mail to the laboratory



4. Check and approval

- Check design proposal and approve production
- Production starts on the same working day after written confirmation (via e-mail) - received before 2pm



5. Production

- Start of production with specified material
- Final quality check



6. Dispatching

UPS parcel dispatch to the laboratory